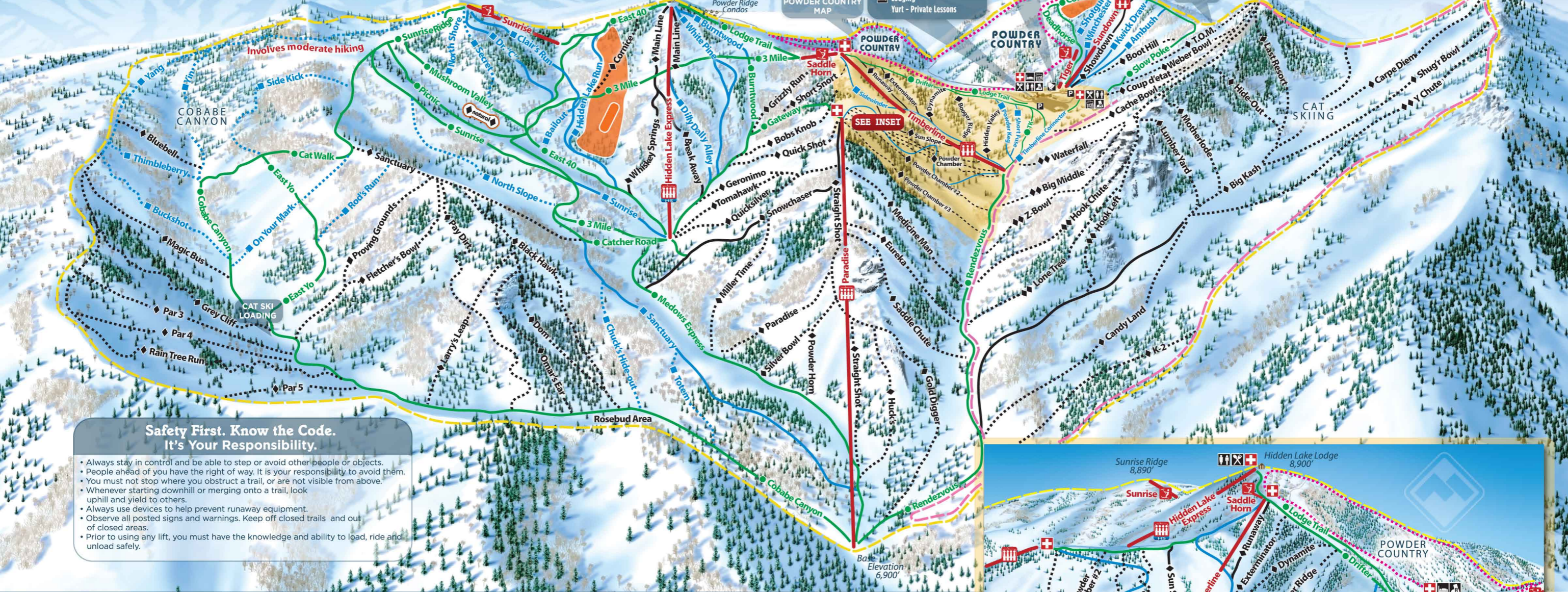




Powder Mountain

- RESORT CENTER / TIMBERLINE**
- Tickets
 - Rentals
 - Sports Shop
 - Adventure Center
 - Restaurants
 - Lodging
 - Yurt - Private Lessons
- SUNDOWN LODGE AREA**
- Tickets
 - Ski School
 - Rentals
 - Restaurant
 - Night Skiing



Safety First. Know the Code. It's Your Responsibility.

- Always stay in control and be able to step or avoid other people or objects.
- People ahead of you have the right of way. It is your responsibility to avoid them.
- You must not stop where you obstruct a trail, or are not visible from above.
- Whenever starting downhill or merging onto a trail, look uphill and yield to others.
- Always use devices to help prevent runaway equipment.
- Observe all posted signs and warnings. Keep off closed trails and out of closed areas.
- Prior to using any lift, you must have the knowledge and ability to load, ride and unload safely.

Powder Mountain

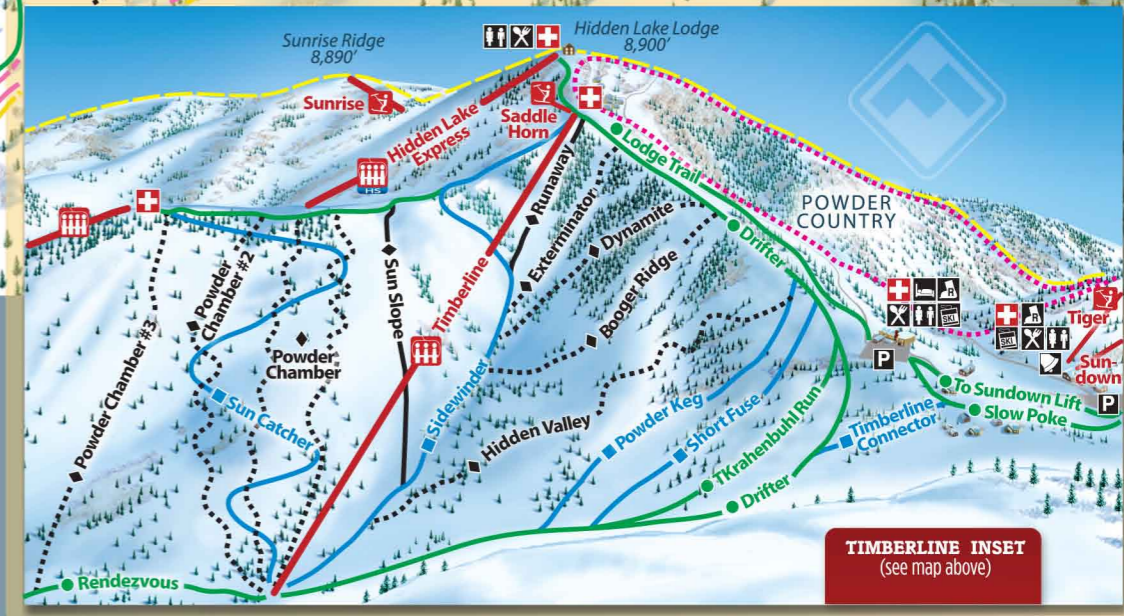
Legend

Easier	More Difficult	Most Difficult	Experts Only	Powder Runs
Restaurants	Parking	Rentals	Restrooms	Tickets
Ski School	Lodging	Natural Half Pipe	Terrain Park/Pipe	Ski Patrol
High Speed Quad Chair	Quad Chair	Triple Chair	Double Chair	Surface Lift
Ski Area Boundary	Ski School Boundary	Cat Skiing Boundary	Powder Country Boundary	

These are Powder Mountain standards and do not reflect those standards of other ski areas.

Lift Information

Lift	Type	Length	Vertical	Close Time
Sundown	Double	2200 ft	600 ft	9:00 PM
Timberline	Triple	3800 ft	900 ft	4:30 PM
Paradise	Quad	5530 ft	1605 ft	4:00 PM
Hidden Lake Express	D-Quad	6000 ft	1300 ft	4:00 PM
Sunrise	Platter Tow	1406 ft	155 ft	3:30 PM
Saddle Horn	Surface	600 ft	80 ft	4:00 PM
Tiger	Surface	650 ft	120 ft	9:00 PM



TIMBERLINE INSET
(see map above)